



UNIVERSITÀ
DEGLI STUDI
DI BRESCIA

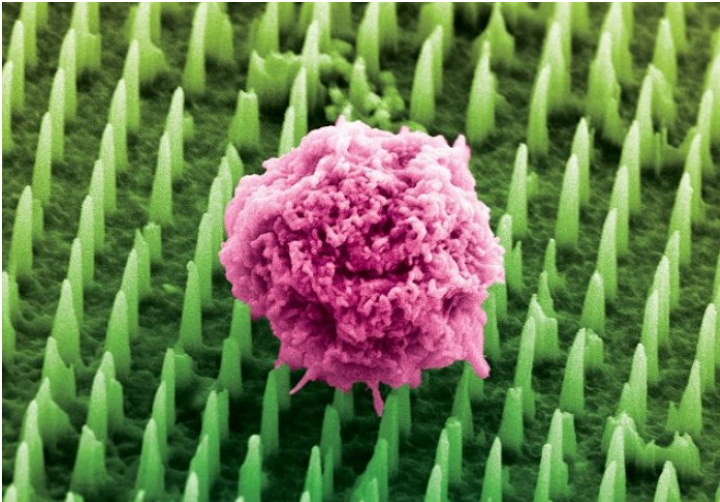
I SEMINARI DEL DIPARTIMENTO DI
MEDICINA MOLECOLARE E TRASLAZIONALE

Ciro Chiappini

Lecturer in Nanomaterials and Biointerfaces
Centre for Craniofacial and Regenerative Biology
King's College London
<http://chiappinilab.com>

Nanoneedle-Based Sensing and Delivery

Mercoledì 24 ottobre 2018 ore 13:00
Aula A1 Edificio Polifunzionale



ABSTRACT. Nanoneedles are rapidly emerging as a tool to interact with the intracellular environment of a large number of cells simultaneously, with limited perturbation of their physiological processes. This interaction provides characteristic advantages for minimally invasive cell and molecular biology investigations, as well as progression of biomedical translation of regenerative and precision medicine approaches. A quick string of several successful proofs of principles have established nanoneedles' potential to efficiently deliver impermeant molecules and nanoparticles

Ospite: Prof. Paolo Bergese

Iniziativa finanziata con Fondi di ateneo per attività a carattere internazionale -
Assegnazioni anno 2018